

# Hotel Ibrahim Pasha Sustainability Report 2025



# Table of Contents

1. **Executive Summary**
2. **Introduction**
3. **Hotel Overview**
  - 3.1 Location and Setting
  - 3.2 Accommodations
  - 3.3 Dining Experience
  - 3.4 Rooftop Terrace
  - 3.5 Unique Features
4. **Preserving Cultural Heritage**
  - 4.1 Historic Building
  - 4.2 Local Artifacts and Decor
  - 4.3 Promoting Art and Culture
  - 4.4 Sustainable Heritage Preservation
5. **Guest Experience and Local Engagement**
  - 5.1 Personalized Service
  - 5.2 Local Engagement
  - 5.3 Culinary Delights
  - 5.4 Cultural Immersion
6. **Energy Consumption and Sustainability Targets**
  - 6.1 Energy Consumption Statistics
  - 6.2 Sustainability Targets
  - 6.3 Promoting Sustainability Awareness
7. **Waste Management and Recycling Initiatives**
  - 7.1 Recycling Programs
  - 7.2 Responsible Disposal Practices
  - 7.3 Partnership with Waste Management Agents
8. **Community Integration**
  - 8.1 Supporting Charities
  - 8.2 Animal Welfare Initiatives
  - 8.3 Earthquake Relief in Hatay

- 8.4 Collaborations with Local Organizations
- 8.5 Engagement and Outreach

## **9. Staff Engagement and Well-being**

- 9.1 Celebrating Special Occasions
- 9.2 Employee Rewards and Incentives
- 9.3 New Year's Eve and Festive Gatherings
- 9.4 Career Development and Training
- 9.5 Health and Well-being Programs
- 9.6 Environmental Awareness and Engagement
- 9.7 Recognition and Feedback

## **10. Cultural Awareness and Local Partnerships**

- 10.1 Supporting Local Stores and Restaurants
- 10.2 Historical City Map and Cultural Guidance
- 10.3 Cultural and Art Event Recommendations
- 10.4 Traditional Motifs in Hotel Decor
- 10.5 Culinary Experiences
- 10.6 Artisanal Workshops and Demonstrations

## **11. Future Goals and Commitments**

- 11.1 Energy Efficiency and Conservation Targets
- 11.2 Water Conservation Initiatives
- 11.3 Waste Reduction and Recycling Goals
- 11.4 Community Engagement and Social Impact
- 11.5 Staff Training and Sustainability Awareness

## **12. Conclusion**

## **13. Hotel Contacts**

---

## 1. Executive Summary

In this comprehensive sustainability report, Hotel Ibrahim Pasha showcases its dedication to preserving local culture, enhancing guest experiences, and advancing sustainability initiatives. Through strategic partnerships and innovative practices, we aim to set new benchmarks in responsible hospitality while contributing positively to our community.

---

## 2. Introduction

Welcome to Hotel Ibrahim Pasha, where history meets hospitality in the heart of Istanbul. Our boutique hotel is named after Ibrahim Pasha Palace, an iconic landmark located nearby, and is dedicated to preserving Istanbul's rich cultural legacy while providing a memorable experience for every guest.

### Our Vision

At Hotel Ibrahim Pasha, we aspire to be a beacon of sustainable tourism in Istanbul. Our vision is to create a harmonious blend of heritage and modernity, offering guests a gateway to explore the city's timeless wonders while championing responsible practices that respect our environment and community.

### Commitment to Sustainability

From the moment you step into our hotel, you'll experience our commitment to sustainability. We strive to minimize our ecological footprint through energy-efficient operations, waste reduction initiatives, and partnerships that support local artisans and businesses.

### Experience Istanbul with Us

Join us on a journey of discovery and authenticity. Whether you're here for business or leisure, Hotel Ibrahim Pasha invites you to immerse yourself in Istanbul's vibrant culture and heritage, guided by our dedication to excellence and sustainability.

---

### 3. Hotel Overview

Welcome to Hotel Ibrahim Pasha, a charming boutique hotel nestled in the heart of historic Istanbul. Our hotel is housed in a beautifully restored building that embodies the essence of Istanbul's rich cultural heritage.

#### Location and Setting

Conveniently located near major attractions such as the Blue Mosque, Hagia Sophia, and Topkapi Palace, Hotel Ibrahim Pasha offers guests unparalleled access to Istanbul's iconic landmarks and vibrant neighborhoods. Our central location makes us an ideal starting point for exploring the city's history, art, and culinary delights.

#### Accommodations

Step into one of our 24 elegantly appointed rooms and suites, each designed to reflect the unique character of Istanbul. Featuring a blend of traditional Ottoman motifs and modern comforts, our accommodations offer a peaceful retreat after a day of sightseeing or business meetings.

#### Dining Experience

Start your day with a delightful breakfast experience in our cozy breakfast room, where we serve a selection of locally sourced delicacies and international favorites. Guests can also unwind and enjoy refreshments at our lobby lounge, surrounded by curated books and artifacts that tell the story of Istanbul's heritage.

#### Rooftop Terrace

Escape to our rooftop terrace and soak in panoramic views of the historic city skyline, including stunning vistas of the Blue Mosque and the shimmering waters of the Marmara Sea. The terrace provides a perfect setting for relaxation, sunset gatherings, and memorable moments overlooking Istanbul's landmarks.







## Unique Features

At Hotel Ibrahim Pasha, every detail reflects our commitment to authenticity and guest satisfaction. From personalized service to cultural experiences, we strive to create an immersive and unforgettable stay for each guest.

---

This enhanced hotel overview section provides a more comprehensive glimpse into the unique features and offerings of Hotel Ibrahim Pasha. It captures the essence of our boutique hotel, inviting guests to discover the magic of Istanbul from our doorstep. Feel free to further customize and expand upon this narrative to showcase the distinct charm and hospitality of your hotel.

---

## **4. Preserving Cultural Heritage**

Hotel Ibrahim Pasha is dedicated to preserving Istanbul's cultural heritage through thoughtful design, curated experiences, and meaningful engagement with our surroundings.

### **Historic Building**

Our hotel is located within a meticulously restored historic building, blending Ottoman architectural elements with contemporary comforts. Every corner of our property tells a story, offering guests a glimpse into Istanbul's illustrious past.

### **Local Artifacts and Decor**

Step into our lobby and guest rooms adorned with traditional motifs, antique furnishings, and curated artifacts that reflect Istanbul's diverse cultural heritage. Each piece is carefully selected to evoke a sense of nostalgia and appreciation for the city's artistic legacy.

### **Promoting Art and Culture**

We actively support local artists and cultural initiatives, showcasing their work within our hotel and providing guests with opportunities to explore Istanbul's thriving art scene through guided tours and exhibitions.



## Sustainable Heritage Preservation

Our commitment to sustainability extends to heritage preservation. We employ eco-friendly practices in our restoration efforts, ensuring that future generations can continue to enjoy Istanbul's architectural treasures.

---



## 5. Guest Experience and Local Engagement

At Hotel Ibrahim Pasha, we believe in creating meaningful connections with our guests and the local community, offering authentic experiences that celebrate Istanbul's culture and traditions.

### Personalized Service

Experience personalized service from our dedicated team, who are passionate about sharing insider tips, arranging cultural tours, and ensuring every guest feels at home in Istanbul.

### Local Engagement

We actively engage with local businesses, recommending nearby shops, restaurants, and attractions to our guests. By supporting local enterprises, we contribute to the vitality of Istanbul's neighborhoods.

### Culinary Delights

Indulge in our breakfast buffet featuring Turkish delights and regional specialties. We invite guests to savor the flavors of Istanbul, from aromatic Turkish coffee to traditional sherbet, served with warmth and hospitality.

### Cultural Immersion

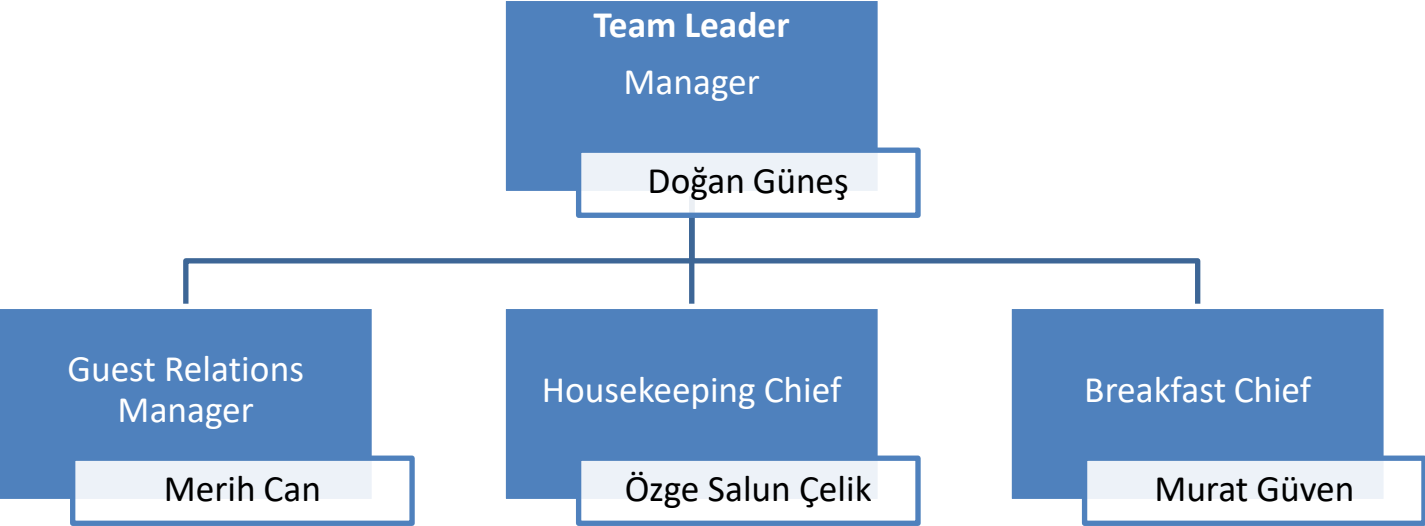
Immerse yourself in Istanbul's cultural tapestry through guided city tours, culinary workshops, and interactive experiences that highlight the city's history, art, and culinary traditions.

---

These expanded sections showcase Hotel Ibrahim Pasha's dedication to preserving cultural heritage, promoting local engagement, and enhancing guest experiences through authentic encounters and sustainable practices. Feel free to adapt and customize this narrative to reflect the unique story and offerings of your hotel.

# 6. Sustainability Initiatives

## Sustainability team



## 6.1 Energy Consumption and Sustainability Targets

At Hotel Ibrahim Pasha, we are committed to reducing our energy consumption and minimizing our environmental impact through targeted sustainability initiatives.

### Energy Consumption Statistics

We continuously monitor our energy consumption across key resources, including water, electricity, and gas. By analyzing consumption data, we gain valuable insights into our operational efficiency and identify areas for improvement.

- **Water Consumption:** In 2024-2025, our average daily water consumption was 0,6 liters per guest room. We aim to reduce water usage by implementing water-saving technologies and encouraging responsible water practices among staff and guests.
- **Electricity Consumption:** Our average daily electricity consumption was 5,26 kWh per guest room during the same period. We have successfully transitioned to energy-efficient LED lighting and implemented smart energy management systems to optimize electricity usage.

| SU SARFİYATI TAKİP TABLOSU - HOTEL İBRAHİM PASHA 2024  |             |             |             |             |             |             |             |             |             |             |            |             |
|--|-------------|-------------|-------------|-------------|-------------|-------------|-------------|-------------|-------------|-------------|------------|-------------|
| Su Kullanım kaynakları (metreküp)<br>(Su kullanım miktarları fatura ve sayaçlardan alınabilir) | Ocak        | Şubat       | Mart        | Nisan       | Mayıs       | Haziran     | Temmuz      | Ağustos     | Eylül       | Ekim        | Kasım      | Aralık      |
| Odalar ve diğer alanlar(m3)  | 120         | 125         | 135         | 195         | 202         | 205         | 320         | 232         | 237         | 223         | 219        | 188         |
|  |             |             |             |             |             |             |             |             |             |             |            |             |
|  |             |             |             |             |             |             |             |             |             |             |            |             |
|  |             |             |             |             |             |             |             |             |             |             |            |             |
|  |             |             |             |             |             |             |             |             |             |             |            |             |
| ...  |             |             |             |             |             |             |             |             |             |             |            |             |
| ...  |             |             |             |             |             |             |             |             |             |             |            |             |
| Aylık Kullanılan Toplam Su Miktarı (m3)  | 120         | 125         | 135         | 195         | 202         | 205         | 320         | 232         | 237         | 223         | 219        | 188         |
| Aylık toplam konaklayan misafir*geceleme sayısı<br>(hesaplama detayı notlar kısmındadır)       | 824         | 1166        | 1330        | 1295        | 1344        | 1228        | 1368        | 1336        | 1338        | 1380        | 1280       | 1114        |
| Misafir/gece başına kullanılan su miktarı<br>(m3su/Misafir.Gece)                               | 0,145631068 | 0,107204117 | 0,101503759 | 0,150579151 | 0,150297619 | 0,166938111 | 0,233918129 | 0,173652695 | 0,177130045 | 0,161594203 | 0,17109375 | 0,168761221 |

- **Gas Consumption:** We monitor gas usage for heating and hot water systems. Our goal is to reduce gas consumption through improved insulation and energy-saving measures.

| HOTEL İBRAHİM PASHA - ENERJİ TAKİP TABLOSU 2024   |        |        |        |        |        |         |        |         |        |        |        |        |
|---|--------|--------|--------|--------|--------|---------|--------|---------|--------|--------|--------|--------|
| ENERJİ TÜRÜ   | Ocak   | Şubat  | Mart   | Nisan  | Mayıs  | Haziran | Temmuz | Ağustos | Eylül  | Ekim   | Kasım  | Aralık |
| <b>Aylık Tüketilen Elektrik (KWH)</b><br>(aylık faturadan veya sayaç takılı odadan veri sağlanabilir) | 6150   | 6183   | 6209   | 5415   | 5516   | 8034    | 8987   | 8184    | 6906   | 5625   | 4951   | 5113   |
| <b>Aylık Tüketilen Doğalgaz (m3)</b><br>(aylık faturadan veya sayaç takılı odadan veri sağlanabilir)  | 944    | 1213   | 1353   | 561    | 378    | 344     | 406    | 342     | 378    | 385    | 853    | 1039   |
| <b>Aylık Tüketilen Motorin (Litre)</b><br>(Satınalma biriminden sarfiyat temin edilebilir)            |        |        |        |        | 10     |         |        |         | 300    |        |        |        |
| <b>Aylık Tüketilen LPG/LNG (Litre)</b><br>(Satınalma biriminden sarfiyat temin edilebilir)            |        |        |        |        |        |         |        |         |        |        |        |        |
| ... (Kullanılan herhangi bir enerji kaynağı yazılabilir)  |        |        |        |        |        |         |        |         |        |        |        |        |
| ... (Kullanılan herhangi bir enerji kaynağı yazılabilir)  |        |        |        |        |        |         |        |         |        |        |        |        |
| <b>Aylık toplam konaklayan misafir*geceleme sayısı</b><br>(hesaplama detayı notlar kısmındadır)       | 824    | 1066   | 1330   | 1295   | 1344   | 1228    | 1368   | 1336    | 1338   | 1380   | 1280   | 1114   |
| <b>Misafir/gece başına kullanılan elektrik enerjisi (KWH/Misafir.Gece)</b>                            | 7,5    | 5,80   | 4,67   | 4,18   | 4,10   | 6,54    | 6,57   | 6,13    | 5,16   | 4,08   | 3,87   | 4,59   |
| <b>Misafir/gece başına kullanılan doğalgaz enerjisi (m3/Misafir.Gece)</b>                             | 1,1    | 1,14   | 1,02   | 0,43   | 0,28   | 0,28    | 0,30   | 0,26    | 0,28   | 0,28   | 0,67   | 0,93   |
| <b>Misafir/gece başına kullanılan motorin (Litre/Misafir.Gece)</b>                                    | 0,0000 | 0,0000 | 0,0000 | 0,0000 | 0,0074 | 0,0000  | 0,0000 | 0,0000  | 0,2242 | 0,0000 | 0,0000 | 0,0000 |

### Sustainability Targets

Hotel Ibrahim Pasha has set ambitious targets to reduce energy consumption and promote sustainable practices throughout our operations:

- **Water Reduction Target:** We aim to reduce water consumption by 2026 through the implementation of water-saving technologies, guest education, and staff training on efficient water management practices.
- **Electricity Reduction Target:** Our goal is to decrease electricity consumption by 2026 by expanding our use of renewable energy sources, upgrading equipment to energy-efficient models, and raising awareness among staff and guests about energy conservation.
- **Gas Reduction Target:** We strive to achieve a reduction in gas consumption by 2026 through improved building insulation, regular maintenance of heating systems, and promoting alternative energy solutions.

### *Promoting Sustainability Awareness*

To achieve our sustainability targets, Hotel Ibrahim Pasha actively promotes awareness of sustainable practices among our staff and guests:

- **Staff Training and Engagement:** We provide regular training sessions and workshops for our staff to raise awareness about energy conservation, waste reduction, and sustainable operations. Employee participation is crucial in achieving our sustainability goals.
  - **Guest Education Programs:** Through in-room materials, signage, and guest communications, we educate our guests about our sustainability initiatives and encourage them to participate in eco-friendly behaviors during their stay.
  - **Feedback and Collaboration:** We welcome feedback from staff and guests on sustainability matters and collaborate with stakeholders to implement innovative solutions that contribute to our energy reduction targets.
- 

By sharing our energy consumption statistics, sustainability targets, and efforts to promote awareness, Hotel Ibrahim Pasha demonstrates our commitment to responsible resource management and environmental stewardship. Through collective action and collaboration, we strive to create a more sustainable future for our hotel and community.

---

This section highlights Hotel Ibrahim Pasha's dedication to reducing energy consumption, setting measurable targets, and engaging both staff and guests in sustainability practices. Feel free to adapt and customize this narrative to reflect specific energy reduction goals and initiatives tailored to your hotel's sustainability strategy.

- technology optimizes energy use while enhancing guest safety and comfort.

## **6.2 Waste Management**



At Hotel Ibrahim Pasha, we are dedicated to reducing waste and implementing sustainable waste management practices to minimize our environmental impact.

### *Recycling Programs*

We have established comprehensive recycling programs throughout our hotel to actively engage guests and staff in waste reduction efforts. Each guest room is equipped with separate bins for recycling various materials, including paper, plastic, glass, and metal. Our housekeeping team diligently collects recyclable items and ensures they are sorted and stored properly.

### *Responsible Disposal of Chemicals and Non-Recyclable Materials*

In addition to recycling, we prioritize the proper disposal of chemicals and non-recyclable materials to protect the environment and human health. Our maintenance and housekeeping staff undergo specialized training to identify and handle hazardous substances safely.

- **Chemical Recycling:** We collect used chemicals and hazardous materials, such as cleaning agents and batteries, in designated containers. These materials are carefully segregated and delivered to authorized disposal agents who specialize in environmentally responsible treatment and recycling.
- **Non-Recyclable Waste Management:** Certain materials that cannot be recycled are managed separately to ensure proper disposal. This includes items such as disposable packaging, broken or obsolete equipment, and other non-recyclable waste generated during hotel operations.

### *Partnership with Waste Management Agents*

Hotel Ibrahim Pasha collaborates with certified waste management agencies to ensure that all collected recyclable materials, chemicals, and non-recyclable waste are handled in compliance with local regulations and environmental standards. Our partnerships emphasize accountability and transparency in waste management practices.

### *Environmental Impact*

Our commitment to responsible waste management extends beyond compliance. By actively engaging guests, staff, and external partners in waste reduction initiatives, we strive to minimize landfill contributions and promote circular economy principles within the hospitality industry.

---

Through these initiatives, Hotel Ibrahim Pasha demonstrates a proactive approach to waste management, integrating sustainability into daily operations while fostering awareness and accountability among stakeholders. We remain committed to continuously improving our waste reduction efforts and exploring innovative solutions to further enhance our environmental stewardship.

---

This narrative emphasizes the hotel's comprehensive approach to waste management, including recycling programs, responsible disposal practices, and partnerships with waste management agencies. It highlights Hotel Ibrahim Pasha's commitment to environmental sustainability and showcases the positive impact of proactive waste reduction initiatives within the hospitality sector. Feel free to adapt and customize this narrative to align with the unique story and initiatives of your hotel.

### *6.3 Eco-friendly Purchasing*

Hotel Ibrahim Pasha prioritizes eco-friendly purchasing practices to support local businesses and reduce environmental impact.

- **Local Sourcing and Sustainable Materials:** We source products locally and prioritize suppliers committed to sustainable practices, including eco-friendly amenities and furnishings.
- **Green Procurement Guidelines:** Our procurement guidelines emphasize the use of sustainable materials and products with minimal environmental impact.

By incorporating these additional details into the Sustainability Initiatives section, Hotel Ibrahim Pasha demonstrates a holistic approach to energy conservation and sustainable practices. The use of auto-timered outdoor lighting and solar-powered LED lights reflects our ongoing commitment to innovative solutions for environmental stewardship.

## **7. Staff Engagement and Well-being**

At Hotel Ibrahim Pasha, our team is at the heart of everything we do. We prioritize the well-being and professional development of our staff through a range of initiatives designed to foster a positive work environment and promote team cohesion.

### *Celebrating Special Occasions*

We believe in recognizing and celebrating the milestones and special occasions of our staff members. Birthdays, work anniversaries, and other significant events are commemorated with heartfelt celebrations, bringing our team closer together and honoring individual contributions.



### *Employee Rewards and Incentives*

As a token of appreciation for their hard work and dedication, we offer our staff tickets to cultural events, concerts, and local attractions. These opportunities not only serve as incentives but also encourage team members to explore and enjoy the cultural richness of Istanbul.

### *New Year's Eve and Festive Gatherings*

During festive seasons like New Year's Eve and other holidays, we organize special gatherings and activities for our staff to unwind and celebrate together. These moments of camaraderie strengthen team spirit and foster a sense of belonging within our hotel family.

### *Career Development and Training*

Hotel Ibrahim Pasha is committed to supporting the professional growth of our staff. We provide opportunities for ongoing training and skill development, empowering employees to excel in their roles and pursue rewarding careers in the hospitality industry.

### *Health and Well-being Programs*

We prioritize the physical and mental health of our staff by offering flexible work arrangements and promoting work-life balance. Regular wellness initiatives, such as yoga sessions or mindfulness workshops, are organized to support staff well-being.

### *Environmental Awareness and Engagement*

Our sustainability efforts extend to staff engagement through education and empowerment. We educate our team members on environmental sustainability practices and encourage their active participation in waste reduction and energy conservation initiatives.

### *Recognition and Feedback*

We believe in the power of recognition and constructive feedback. Our management team regularly acknowledges exemplary performance and welcomes staff input to continuously improve our operations and guest experiences.

---

Through these initiatives, Hotel Ibrahim Pasha fosters a supportive and inclusive work culture, where staff members feel valued, motivated, and empowered to contribute to our shared success. We are committed to nurturing our team's growth and well-being, knowing that they play an integral role in delivering exceptional experiences to our guests.

## 8. Community Integration

At Hotel Ibrahim Pasha, we are committed to making a positive impact on our local community and supporting initiatives that promote social responsibility and well-being.

### *Supporting Charities*

We actively support local charities and nonprofit organizations dedicated to various causes, including education, healthcare, and social welfare. Through financial contributions and volunteer efforts, we aim to uplift disadvantaged communities and create meaningful change.

### *Animal Welfare Initiatives*

As part of our commitment to animal welfare, we regularly purchase food supplies for local animal farms and shelters. Our support helps ensure that animals receive proper care and nutrition, fostering a compassionate and sustainable approach to animal welfare in our community.

### *Earthquake Relief in Hatay*

In response to the devastating earthquake in Hatay, we extended our support to communities affected by the disaster. Hotel Ibrahim Pasha contributed donations to reputable relief organizations working on the ground to provide essential aid and support to those in need.

### *Collaborations with Local Organizations*

We actively collaborate with local organizations and initiatives that align with our values of sustainability and community well-being. By partnering with like-minded entities, we amplify our impact and create opportunities for collective action to address pressing social and environmental challenges.

### *Engagement and Outreach*

Our commitment to community integration goes beyond financial support. We engage our staff and guests in community outreach programs, encouraging participation in volunteer activities and awareness campaigns that promote social responsibility and community empowerment.

---

Through these community integration initiatives, Hotel Ibrahim Pasha demonstrates our dedication to creating a positive impact beyond our hotel walls. We believe in the importance of giving back to our community and working collaboratively to build a more inclusive and sustainable future for all.

---

This narrative showcases Hotel Ibrahim Pasha's meaningful contributions to community development, animal welfare, and disaster relief efforts. By actively supporting local charities and engaging in collaborative initiatives, we strive to foster positive social change and enrich the lives of those in our community. Feel free to adapt and customize this narrative to reflect the specific community engagement initiatives and values of your hotel.

## **9. Cultural Awareness and Local Partnerships**

At Hotel Ibrahim Pasha, we are passionate about celebrating Istanbul's vibrant culture and heritage. Through strategic partnerships and curated experiences, we aim to enrich our guests' stay with authentic insights and memorable encounters.



### *Supporting Local Stores and Restaurants*

We actively support local businesses by recommending them to our guests. Our front desk team provides personalized recommendations for nearby stores, restaurants, and artisans, encouraging guests to explore and support local establishments.

### *Historical City Map and Cultural Guidance*

Upon arrival, each guest receives a specially curated city map highlighting must-see historical sites and local businesses. The map is accompanied by educational materials that offer insights into Istanbul's rich history, providing guests with a deeper understanding of the city's cultural significance.

### *Cultural and Art Event Recommendations*

We keep our guests informed about the latest cultural and artistic events happening in Istanbul. Our lobby bulletin boards display up-to-date information on exhibitions, performances, and festivals, allowing guests to immerse themselves in the city's vibrant cultural scene.

### *Traditional Motifs in Hotel Decor*

Hotel Ibrahim Pasha's interior design reflects a harmonious blend of tradition and modernity. Our rooms and common areas are adorned with traditional motifs and decorative elements inspired by Istanbul's cultural heritage, creating an immersive and authentic atmosphere for our guests.

### *Culinary Experiences*

To introduce guests to Turkish cuisine, we offer local delicacies such as şerbet (traditional Turkish sherbet) and lokum (Turkish delight). These culinary delights are served as welcome treats, inviting guests to savor the flavors of our heritage and culinary traditions.

### *Artisanal Workshops and Demonstrations*

We collaborate with local artisans to organize workshops and demonstrations that showcase traditional crafts such as ceramics, calligraphy, and carpet weaving. These interactive experiences provide guests with hands-on opportunities to appreciate and learn about Turkey's rich artistic traditions.

---

Through these cultural awareness initiatives and local partnerships, Hotel Ibrahim Pasha aims to create meaningful connections between guests and the vibrant cultural tapestry of Istanbul. By promoting local businesses, offering educational resources, and celebrating culinary and artistic heritage, we invite guests to embark on a journey of discovery and appreciation during their stay.

---

This narrative highlights Hotel Ibrahim Pasha's commitment to promoting cultural awareness and supporting local partnerships through personalized guest experiences and immersive cultural encounters. Feel free to adapt and customize this narrative to reflect the specific cultural initiatives and values of your hotel.

---

## **11. Future Goals and Commitments**

Looking ahead, Hotel Ibrahim Pasha is dedicated to advancing our sustainability efforts and setting new benchmarks for responsible hospitality. We have established bold goals and commitments to further reduce our environmental impact and enhance our positive contributions to the community.

### *Energy Efficiency and Conservation Targets*

**Target:** By 2026, Hotel Ibrahim Pasha aims to achieve a 3 % reduction in overall energy consumption compared to 2023 levels.

**Strategies:** We will implement advanced energy management systems, optimize heating and cooling systems, and continue upgrading to energy-efficient appliances and lighting solutions throughout the hotel.

**Projected Outcome:** Achieving this target will not only lower our operational costs but also significantly decrease our carbon footprint, contributing to a more sustainable hospitality industry.

### *Water Conservation Initiatives*

**Target:** Reduce water consumption by 4 % by 2026 through the implementation of water-saving technologies and guest education programs.

**Strategies:** We will install water-efficient fixtures, promote towel and linen reuse programs, and educate guests and staff on responsible water usage practices.

**Projected Outcome:** By conserving water resources, we aim to minimize our environmental impact and contribute to the preservation of local water ecosystems.

### *Waste Reduction and Recycling Goals*

**Target:** Increase our overall recycling rate to 10 % by 2026 by expanding recycling programs and implementing waste minimization strategies.

**Strategies:** We will enhance waste segregation practices, collaborate with local recycling facilities, and engage staff and guests in waste reduction initiatives.

**Projected Outcome:** By reducing waste generation and increasing recycling rates, Hotel Ibrahim Pasha will contribute to a circular economy and reduce landfill contributions.

### *Community Engagement and Social Impact*

**Target:** Strengthen community partnerships and increase support for local charities and initiatives.

**Strategies:** We will continue to collaborate with local businesses, support community development projects, and actively participate in disaster relief efforts.

**Projected Outcome:** By fostering meaningful relationships with our community, we aim to create positive social impact and contribute to the well-being of those in need.

#### *Staff Training and Sustainability Awareness*

**Target:** Enhance staff training programs to further promote sustainability awareness and engagement.

**Strategies:** We will provide ongoing education and professional development opportunities for our team members, empowering them to champion sustainability initiatives within the hotel.

**Projected Outcome:** By empowering our staff with knowledge and skills, we will strengthen our collective commitment to sustainability and foster a culture of environmental stewardship.

---

Through these future goals and commitments, Hotel Ibrahim Pasha demonstrates our proactive approach to sustainability and responsible business practices. By setting measurable targets and implementing strategic initiatives, we aim to inspire positive change within our industry and community while delivering exceptional experiences to our guests.

---

This expanded section outlines Hotel Ibrahim Pasha's ambitious goals and commitments towards sustainability, highlighting projected outcomes and strategies to achieve measurable results. Feel free to adapt and customize this narrative to align with specific targets and initiatives that reflect your hotel's sustainability vision and values.

---

## **12. Conclusion**

In conclusion, Hotel Ibrahim Pasha remains steadfast in our commitment to redefining sustainable hospitality and preserving Istanbul's rich cultural heritage. Through innovative initiatives, strategic partnerships, and a dedicated team, we have made significant strides towards minimizing our environmental impact and fostering positive social change.

Our journey towards sustainability is characterized by:

- **Preserving Cultural Heritage:** From our historic building to our curated guest experiences, we celebrate Istanbul's cultural legacy and share its treasures with visitors from around the world.
- **Community Engagement:** We actively support local businesses, charities, and initiatives, strengthening our ties with the community and contributing to meaningful social impact.
- **Environmental Stewardship:** Through energy conservation, waste reduction, and responsible resource management, we are committed to minimizing our ecological footprint and promoting sustainable practices.
- **Staff Empowerment:** Our team members are at the heart of our success. We invest in their development, well-being, and sustainability awareness to collectively drive positive change.

As we look to the future, Hotel Ibrahim Pasha is dedicated to achieving even greater milestones in sustainability. Our commitment extends beyond compliance to proactive innovation and continuous improvement, guided by our core values of integrity, excellence, and authenticity.

For more information about our sustainability initiatives or to explore partnership opportunities, please contact us:

- **Hotel Ibrahim Pasha**
  - Address: Binbirdirek Mah. Terzihane Sok. No:9 Fatih/İST
  - Phone: +90 212 518 03 94
  - Email: [contact@ibrahimpasha.com](mailto:contact@ibrahimpasha.com)

- Website: [www.ibrahimpasha.com](http://www.ibrahimpasha.com)

Join us on our journey towards a more sustainable and vibrant future. Together, we can make a difference and create lasting value for our guests, our community, and our planet.

---

This conclusion encapsulates Hotel Ibrahim Pasha's dedication to sustainability and cultural preservation, inviting stakeholders to connect and collaborate in shaping a brighter future. Feel free to adapt and customize this narrative to reflect specific achievements and contact information tailored to your hotel's sustainability story and objectives.